

Group3

DTM-152

Digital Teslameter

With Touchscreen Interface and Data Logger



GROUP3 TECHNOLOGY LIMITED

2 Charann Place
Avondale, Auckland
1026 New Zealand

PH +64 9 828 3358
Fax +64 9 828 3357
Email sales@group3technology.com
Facebook [facebook.com/Group3Tech](https://www.facebook.com/Group3Tech)
Twitter @Group3Tech

Group3

Accelerating Innovation

www.group3technology.com

Product Description

The DTM-152 Digital Teslameter is the latest product of Group3 that boast a touch screen interface to operate the DTM. Instead of mechanical switches and buttons that are still being used on the older versions to operate the unit, the DTM-152 display is touchscreen-based so setting the unit to user's specification is quick and easy. The digital readout now shows not just the field reading but the temperature of the sample at the same time.

Another feature of the DTM-152 is its data logging capability where user can now do their data gathering on the DTM itself and saves the output CSV file on to an external memory drive such as a USB drive or hard disk. This eliminates the need for a separate computer terminal and software to do a data log of a session such as field mapping of a magnet.

Also, a useful feature is the Graph function of the DTM-152. Users can see the behaviour of a session instead of just looking at the field reading. The graphical display lets the user monitor visually if there are sudden or abrupt changes in the field over a period. The time and field range are configurable depending on the user's preferences.

Lastly, the DTM-152 can be monitored and controlled over a network, thanks to the built –in Ethernet connectivity and our custom-built LabView VI (supplied) that can be installed via a Windows PC. Applications such as synching the timing of a robot arm when mapping the field of a magnet makes this an important and useful feature.

DTM-152 performance with listed probe

DTM-151 performance with listed probe	Active area (mm)	Resolution of display	Max field	Finest resolution	Accuracy at 25° C	Tempco ppm /°C	zero drift μ T/°C
LPT-141	4 x 1.6	1 in 600,000	3T	1 μ T	± 0.01%	±10	±1
LPT-231	4 x 1.6	1 in 600,000	0.3T	0.1 μ T	± 0.03%	±25	±1
MPT-141	1 x 0.5	1 in 600,000	3T	1 μ T	± 0.01%	±10	±1
MPT-231	1 x 0.5	1 in 600,000	0.3T	0.1 μ T	± 0.03%	±25	±1

Features and Specifications

- Accuracy is 0.01% of reading + 0.006% of full scale when used with MPT-141 probe
- zero drift: $\pm (1\text{m T} + 0.0003\% \text{ of full scale}) / ^\circ \text{C max.}$
- Touch Screen Interface
- Easy Access Control
- Graphical Display, Field versus Time
- Visual monitoring of out of range readings, settable range
- 1.0 μ T Resolution with MPT-141 or LPT-141
- Multiple Session Data Log and CSV file saved to USB memory
- Analog Output
- Robust enclosure
- Bench top or mountable to 19" Standard Rack Panel
- Ethernet communication
- Supplied with custom-built LabView VI for external monitoring

HOME TAB



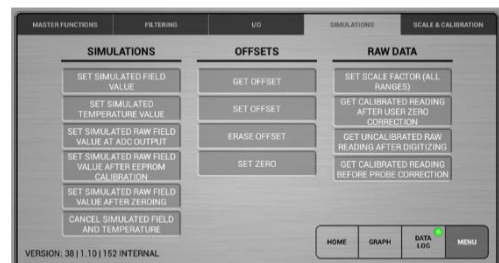
GRAPH TAB



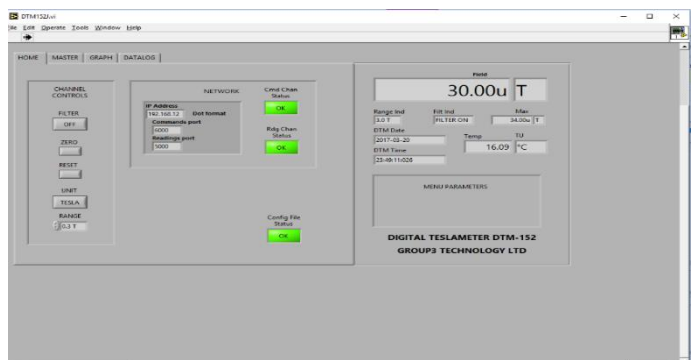
DATA LOG TAB



MENU TAB



LABVIEW VI Screenshot



www.group3technology.com

Group3

V7.2 01 October 2018